

A SHELTER FOR NUNAVIK

PROTOTYPE OF A HOME ON A CONTAINER



FOR COORDINATION

2024-02-21

SHEETS LIST

SERIES 0 - GENERALITIES

0.0 TITLE PAGE

0.1 OPENING TABLE

SERIES 1 - SITE

1.0 SITE PLAN

SERIES 2 - EXTERIOR ELEVATIONS

2.0 ELEVATIONS

SERIES 3 - FLOOR PLANS

3.1 SHELTER PLAN

3.2 CONTAINER PLAN

SERIES 6 - SECTIONS AND DETAILS

6.0 STANDARD COMPOSITIONS

6.1 GENERAL SECTIONS

6.2 GENERAL SECTIONS

SERIES S - STEP-BY-STEP

S2 STEP 2 - SUBFLOOR

S3 STEP 3 - FRAMING STUDS

S4 STEP 4 - ROOF TRUSSES

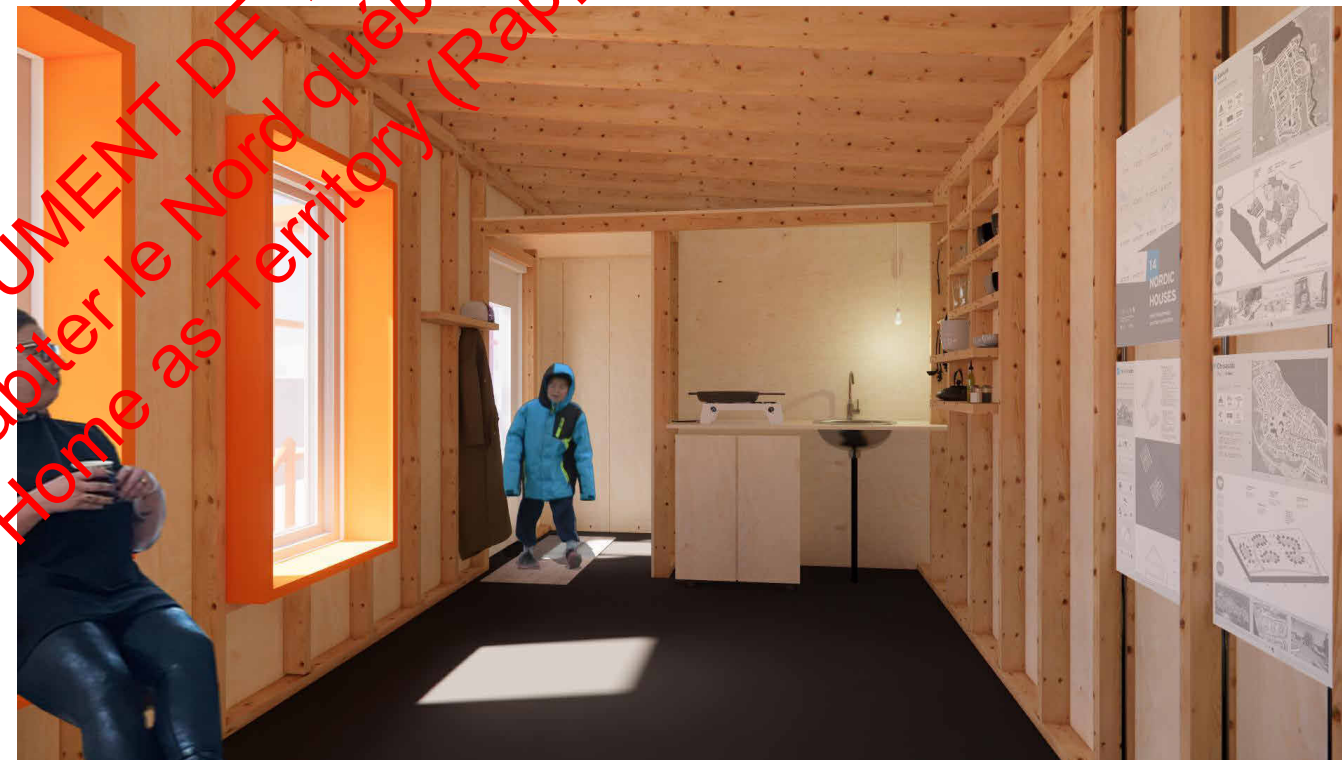
S5 STEP 5 - SHEETING

S6 STEP 6 - BARRIER

S7 STEP 7 - DOORS AND WINDOWS

S8 STEP 8 - INSULATION

S9 STEP 9 - FURRING



LANTERNE
ARCHITECTES

3b René-Levesque Est
Québec, QC G1R 2A9

PROJECT A SHELTER FOR NUNAVIK

PROJECT NUMBER 2440

CLIENT

Habiter le Nord québécois
École d'architecture de
l'Université Laval
1 Côte de la Fabrique
Québec (Qc) G1R 3V6

EMISSIONS

FOR COORDINATION	2025-02-14
FOR COORDINATION	2025-02-21

TITLE PAGE

0.0

SHEET

PROJECT
**A SHELTER FOR
NUNAVIK**

PROJECT NUMBER 2440

CLIENT

Habiter le Nord québécois
École d'architecture de
l'Université Laval
1 Côte de la Fabrique
Québec (Qc) G1R 3V6

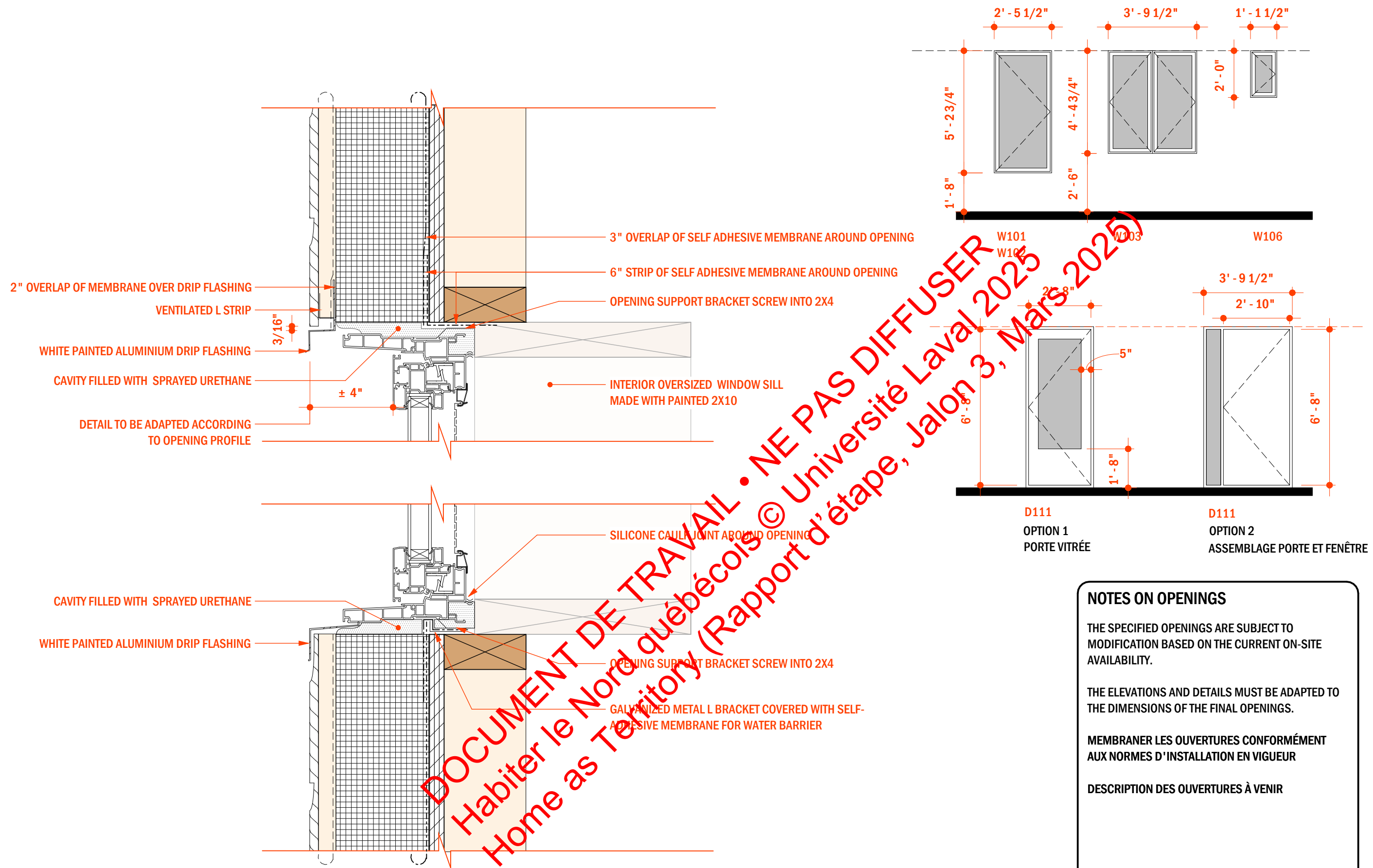
EMISSIONS

FOR COORDINATION	2025-02-14
FOR COORDINATION	2025-02-21

OPENING TABLE

0.1

SHEET



DOCUMENT DE TRAVAIL • NE PAS DIFFUSER
Habiter le Nord québécois © Université Laval 2025
Home as Territory (Rapport d'étape, Jalon 3, Mars 2025)

NOTES ON OPENINGS

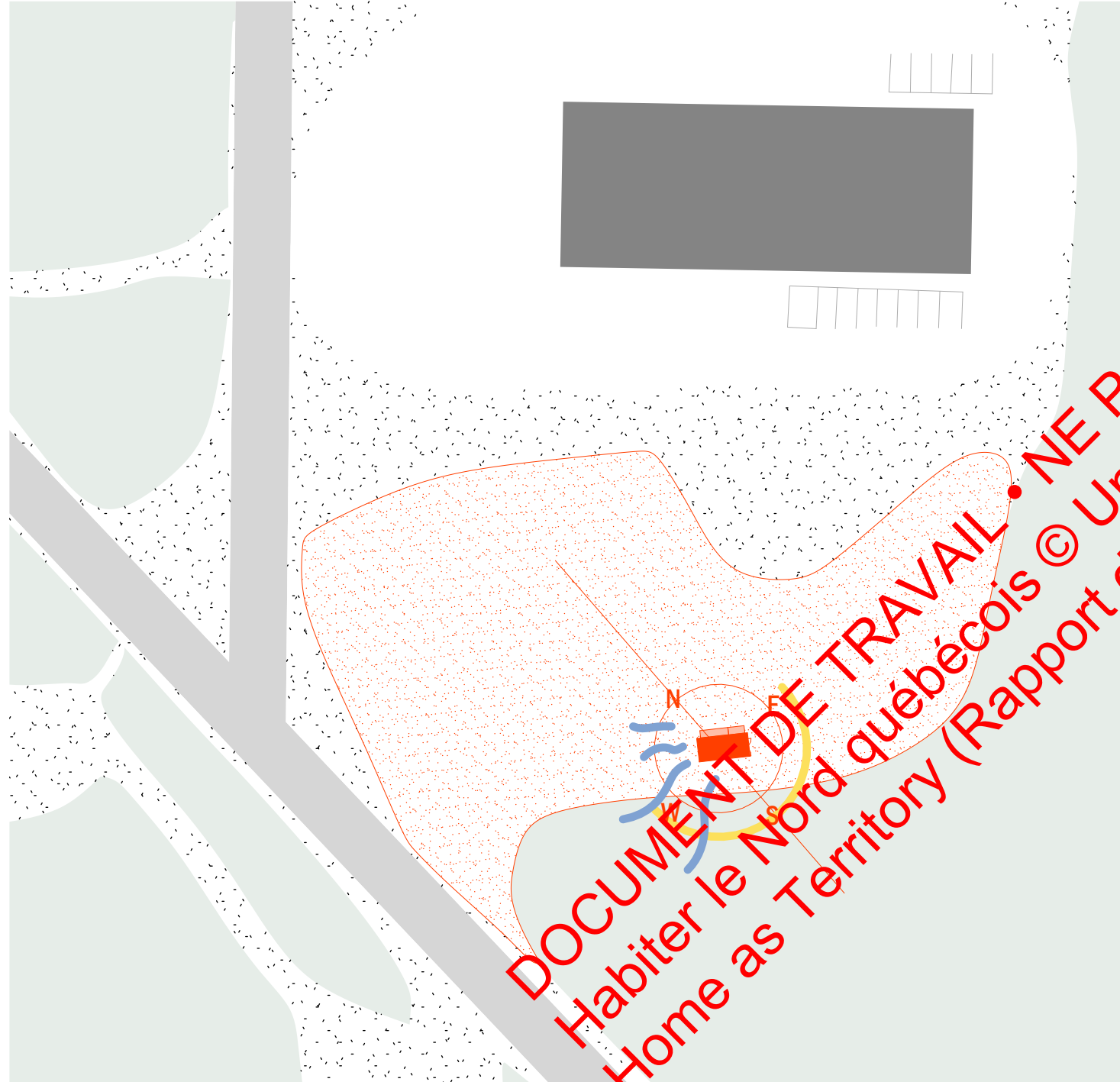
THE SPECIFIED OPENINGS ARE SUBJECT TO MODIFICATION BASED ON THE CURRENT ON-SITE AVAILABILITY.

THE ELEVATIONS AND DETAILS MUST BE ADAPTED TO THE DIMENSIONS OF THE FINAL OPENINGS.

MEMBRANER LES OUVERTURES CONFORMÉMENT AUX NORMES D'INSTALLATION EN VIGUEUR

DESCRIPTION DES OUVERTURES À VENIR

01.1 TYPICAL OPENINGS DETAILS
SCALE 3" = 1'-0"



DOCUMENT DE TRAVAIL • NE PAS DIFFUSER
Habiter le Nord québécois © Université Laval 2025
Home as Territory (Rapport d'étape, Jalon 3, Mars 2025)

2 SITE PLAN
2.0 SCALE 1/64" = 1'-0"

**LANTERNE
ARCHITECTES**

3b René-Levesque Est
Québec, QC G1R 2A9

PROJECT
**A SHELTER FOR
NUNAVIK**

PROJECT NUMBER 2440

CLIENT

Habiter le Nord québécois
École d'architecture de
l'Université Laval
1 Côte de la Fabrique
Québec (Qc) G1R 3V6

EMISSIONS

FOR COORDINATION	2025-02-14
FOR COORDINATION	2025-02-21

SITE PLAN

1.0

SHEET

PROJECT
**A SHELTER FOR
NUNAVIK**

PROJECT NUMBER 2440

CLIENT

Habiter le Nord québécois
École d'architecture de
l'Université Laval
1 Côte de la Fabrique
Québec (Qc) G1R 3V6

EMISSIONS

FOR COORDINATION	2025-02-14
FOR COORDINATION	2025-02-21

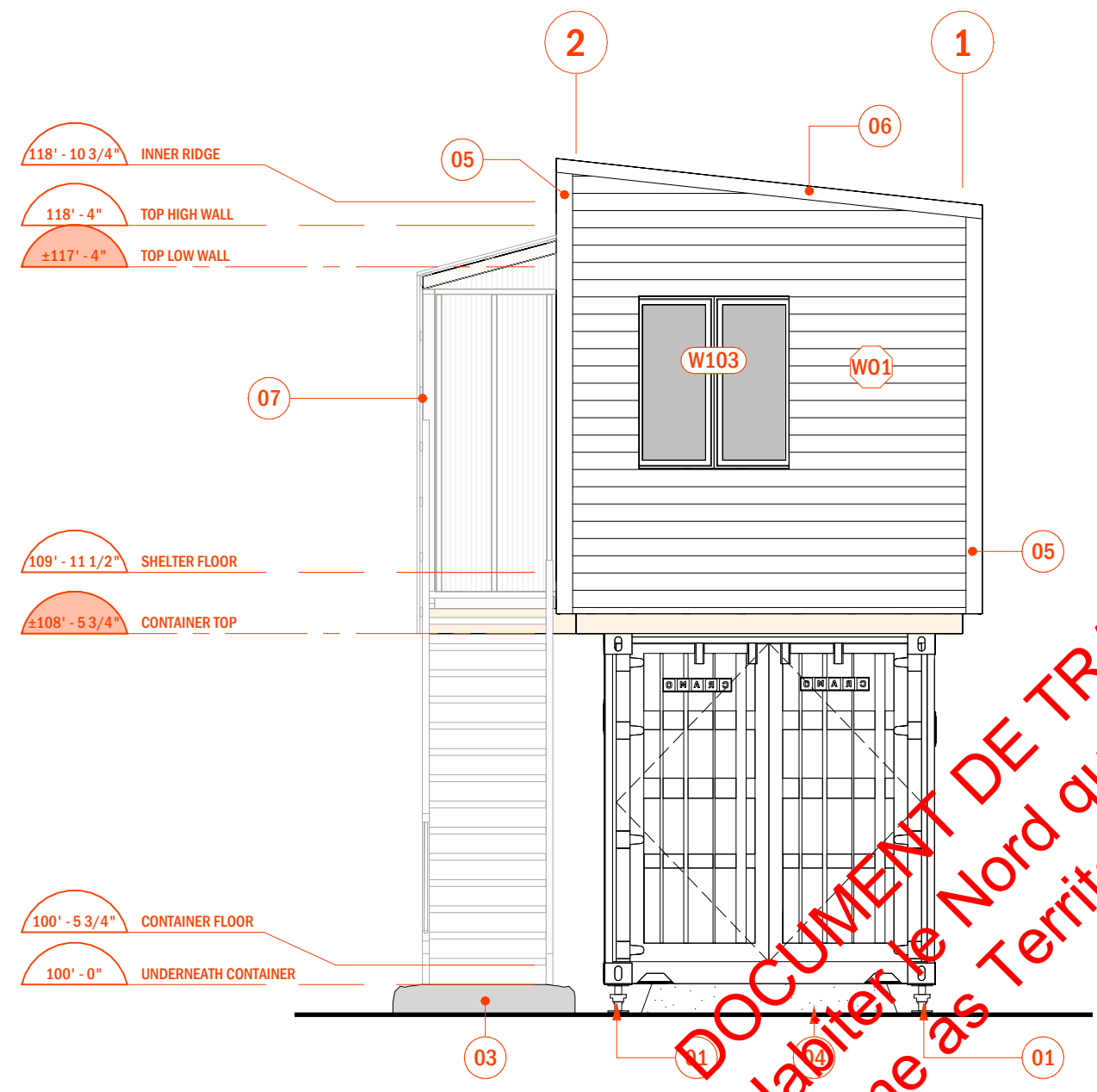
ELEVATIONS

2.0

SHEET

LEGEND ELEVATIONS	
OPENINGS	EXTERIOR FINISHES
<p>XXXX : DOOR NUMBER WXXX : WINDOW NUMBER [SEE SHEET 0.1]</p>	<p>W01 CANEXEL MAIBEC RIDGEWOOD COLOR GRANIT</p>

SPECIFIC NOTES ELEVATIONS	
ARCHITECTURE	
01	ADJUSTABLE JACK (4) AS A FOUNDATION FOR THE CONTAINER
02	REMOVABLE WHEEL (2) INSERTED ON ONE END OF THE CONTAINER FOR MOVING
03	LARGE NATURAL STONE FROM THE SURROUNDING AS FIRST STEP
04	RAMP MADE WITH COMPACTED GROUND MATERIAL
05	CORNER TRIM COLOR MATCHED TO SIDING.
06	WHITE PAINTED ALUMINIUM FLASHING
07	OUTSIDE PORCH MADE WITH PAINTED 2X4 AND CLEAR CORRUGATED POLYCARBONATE ROOF PANEL INSTALLED ON PAINTED 1X3 FURRING STRIPS
08	WOOD OR METAL STAIRS WITH RAILINGS
SPECIALTIES	
50	[NOTE]
51	[NOTE]
52	[NOTE]
53	[NOTE]



20.1 EAST ELEVATION
3.1 SCALE 1/4" = 1'-0"

DOCUMENT DE TRAVAIL • NE PAS DIFFUSER
Habiter le Nord québécois © Université Laval 2025, Jalon 3, Mars 2025
Home as Territory (Rapport d'étape)

PROJECT
**A SHELTER FOR
NUNAVIK**

PROJECT NUMBER 2440

CLIENT
Habiter le Nord québécois
École d'architecture de
l'Université Laval
1 Côte de la Fabrique
Québec (Qc) G1R 3V6

EMISSIONS

FOR COORDINATION	2025-02-14
FOR COORDINATION	2025-02-21

ELEVATIONS

2.1

SHEET

LEGEND

ELEVATIONS	
OPENINGS	EXTERIOR FINISHES
<p>XXXX : DOOR NUMBER WXXX : WINDOW NUMBER [SEE SHEET 0.1]</p>	<p>W01 CANEXEL MAIBEC RIDGEWOOD COLOR GRANIT</p>

SPECIFIC NOTES

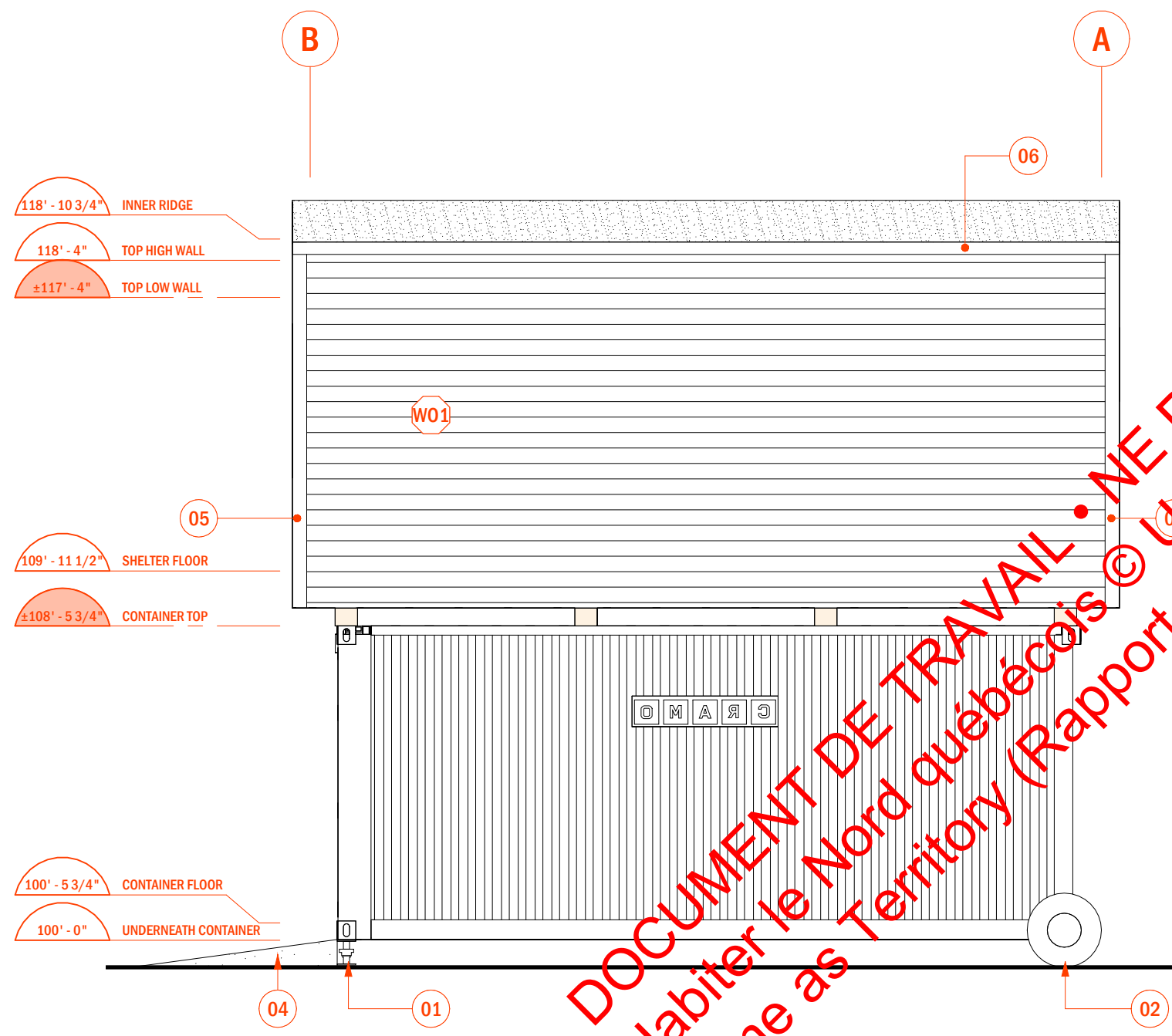
ELEVATIONS

ARCHITECTURE

- 01 ADJUSTABLE JACK (4) AS A FOUNDATION FOR THE CONTAINER
- 02 REMOVABLE WHEEL (2) INSERTED ON ONE END OF THE CONTAINER FOR MOVING
- 03 LARGE NATURAL STONE FROM THE SURROUNDING AS FIRST STEP
- 04 RAMP MADE WITH COMPACTED GROUND MATERIAL
- 05 CORNER TRIM COLOR MATCHED TO SIDING.
- 06 WHITE PAINTED ALUMINIUM FLASHING
- 07 OUTSIDE PORCH MADE WITH PAINTED 2X4 AND CLEAR CORRUGATED POLYCARBONATE ROOF PANEL INSTALLED ON PAINTED 1X3 FURRING STRIPS
- 08 WOOD OR METAL STAIRS WITH RAILINGS

SPECIALTIES

- 50 [NOTE]
- 51 [NOTE]
- 52 [NOTE]
- 53 [NOTE]



21.1 NORTH ELEVATION
3.1 SCALE 1/4" = 1'-0"

DOCUMENT DE TRAVAIL • NE PAS DIFFUSER •
Habiter le Nord québécois © Université Laval 2025, Jalon 3, Mars 2025
Home as Territory (Rapport d'étape, Jalon 3, Mars 2025)

PROJECT
**A SHELTER FOR
NUNAVIK**

PROJECT NUMBER 2440

CLIENT
Habiter le Nord québécois
École d'architecture de
l'Université Laval
1 Côte de la Fabrique
Québec (Qc) G1R 3V6

EMISSIONS

FOR COORDINATION	2025-02-14
FOR COORDINATION	2025-02-21

ELEVATIONS

2.2

SHEET

LEGEND
ELEVATIONS

OPENINGS DXXX : DOOR NUMBER WXXX : WINDOW NUMBER [SEE SHEET 0.1]	EXTERIOR FINISHES W01 CANEXEL MAIBEC RIDGWOOD COLOR GRANIT
--	---

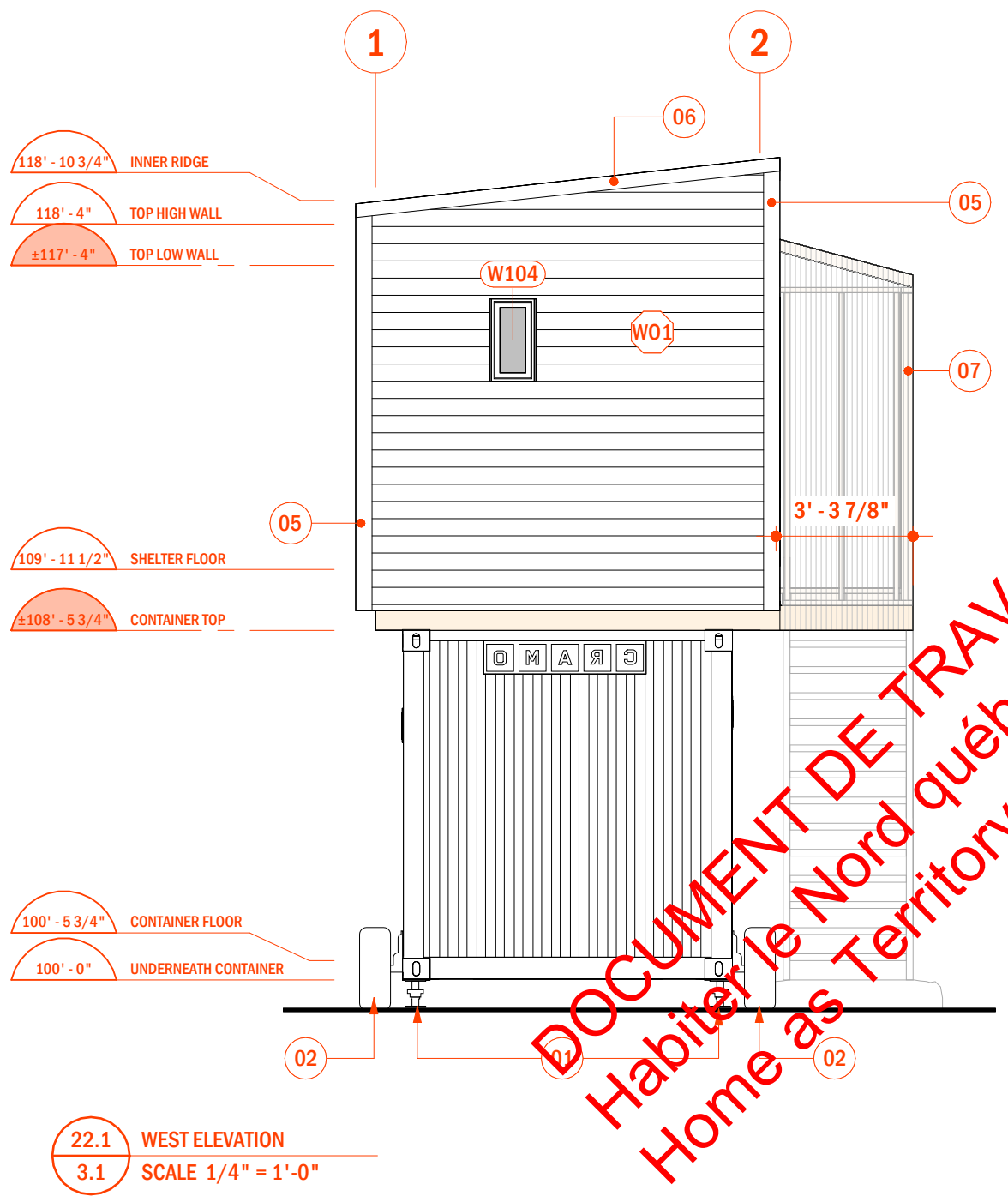
SPECIFIC NOTES
ELEVATIONS

ARCHITECTURE

- 01 ADJUSTABLE JACK (4) AS A FOUNDATION FOR THE CONTAINER
- 02 REMOVABLE WHEEL (2) INSERTED ON ONE END OF THE CONTAINER FOR MOVING
- 03 LARGE NATURAL STONE FROM THE SURROUNDING AS FIRST STEP
- 04 RAMP MADE WITH COMPACTED GROUND MATERIAL
- 05 CORNER TRIM COLOR MATCHED TO SIDING.
- 06 WHITE PAINTED ALUMINIUM FLASHING
- 07 OUTSIDE PORCH MADE WITH PAINTED 2X4 AND CLEAR CORRUGATED POLYCARBONATE ROOF PANEL INSTALLED ON PAINTED 1X3 FURRING STRIPS
- 08 WOOD OR METAL STAIRS WITH RAILINGS

SPECIALTIES

- 50 [NOTE]
- 51 [NOTE]
- 52 [NOTE]
- 53 [NOTE]



DOCUMENT DE TRAVAIL • NE PAS DIFFUSER
Habiter le Nord québécois © Université Laval 2025, Jalon 3, Mars 2025
Home as Territory (Rapport d'étape)

PROJECT
**A SHELTER FOR
NUNAVIK**

PROJECT NUMBER 2440

CLIENT
Habiter le Nord québécois
École d'architecture de
l'Université Laval
1 Côte de la Fabrique
Québec (Qc) G1R 3V6

EMISSIONS

FOR COORDINATION	2025-02-14
FOR COORDINATION	2025-02-21

ELEVATIONS

2.3

SHEET

LEGEND
ELEVATIONS

OPENINGS	EXTERIOR FINISHES
<p>XXXX : DOOR NUMBER WXXX : WINDOW NUMBER [SEE SHEET 0.1]</p>	<p>W01 CANEXEL MAIBEC RIDGWOOD COLOR GRANIT</p>

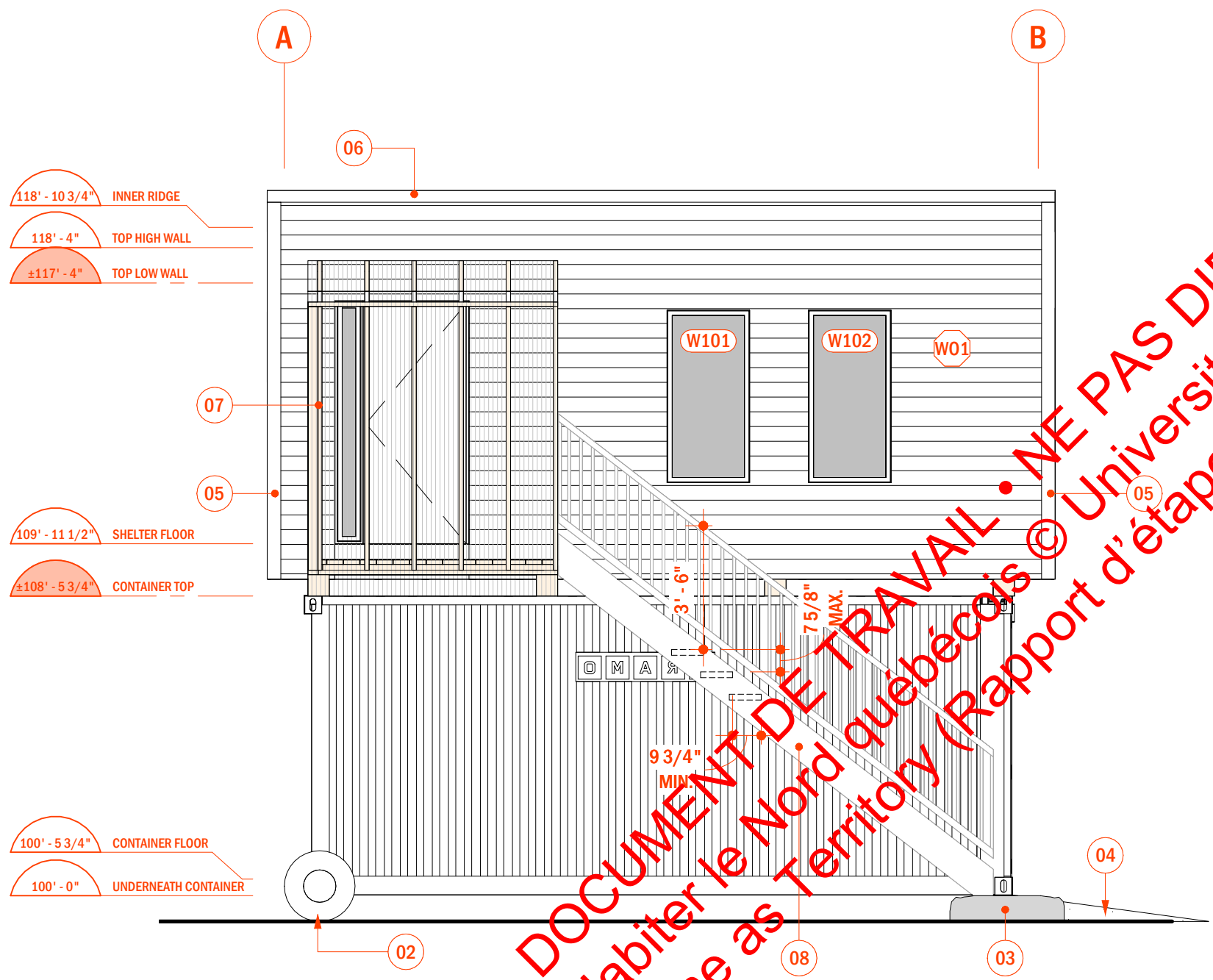
SPECIFIC NOTES
ELEVATIONS

ARCHITECTURE

- 01 ADJUSTABLE JACK (4) AS A FOUNDATION FOR THE CONTAINER
- 02 REMOVABLE WHEEL (2) INSERTED ON ONE END OF THE CONTAINER FOR MOVING
- 03 LARGE NATURAL STONE FROM THE SURROUNDING AS FIRST STEP
- 04 RAMP MADE WITH COMPACTED GROUND MATERIAL
- 05 CORNER TRIM COLOR MATCHED TO SIDING.
- 06 WHITE PAINTED ALUMINIUM FLASHING
- 07 OUTSIDE PORCH MADE WITH PAINTED 2X4 AND CLEAR CORRUGATED POLYCARBONATE ROOF PANEL INSTALLED ON PAINTED 1X3 FURRING STRIPS
- 08 WOOD OR METAL STAIRS WITH RAILINGS

SPECIALTIES

- 50 [NOTE]
- 51 [NOTE]
- 52 [NOTE]
- 53 [NOTE]



- 118' - 10 3/4" INNER RIDGE
- 118' - 4" TOP HIGH WALL
- ±117' - 4" TOP LOW WALL
- 109' - 11 1/2" SHELTER FLOOR
- ±108' - 5 3/4" CONTAINER TOP
- 100' - 5 3/4" CONTAINER FLOOR
- 100' - 0" UNDERNEATH CONTAINER

23.1 SOUTH ELEVATION
3.1 SCALE 1/4" = 1'-0"

DOCUMENT DE TRAVAIL • NE PAS DIFFUSER • Université Laval 2025, Jalon 3, Mars 2025

Habiter le Nord québécois (Rapport d'étape, Jalon 3, Mars 2025)

Home as Territory

PROJECT A SHELTER FOR NUNAVIK

PROJECT NUMBER 2440

CLIENT

Habiter le Nord québécois
École d'architecture de
l'Université Laval
1 Côte de la Fabrique
Québec (Qc) G1R 3V6

EMISSIONS

FOR COORDINATION	2025-02-14
FOR COORDINATION	2025-02-21

SHELTER PLAN

3.1

SHEET

LEGEND
FLOOR PLANS

WALLS AND PARTITIONS	DIMENSIONS
(X) — TYPE COMPOSITION [SEE SHEET 6.0]	(X) GROSS OPENING
== NEW PARTITION	O.B. REQUIRED CLEARANCE LIBRE BETWEEN FINISHED FACES
OPENINGS	OTHER
(XXXX) DXXX : DOOR NUMBER WXXX : WINDOW NUMBER [SEE SHEET 0.1]	
(D) NEW DOOR	

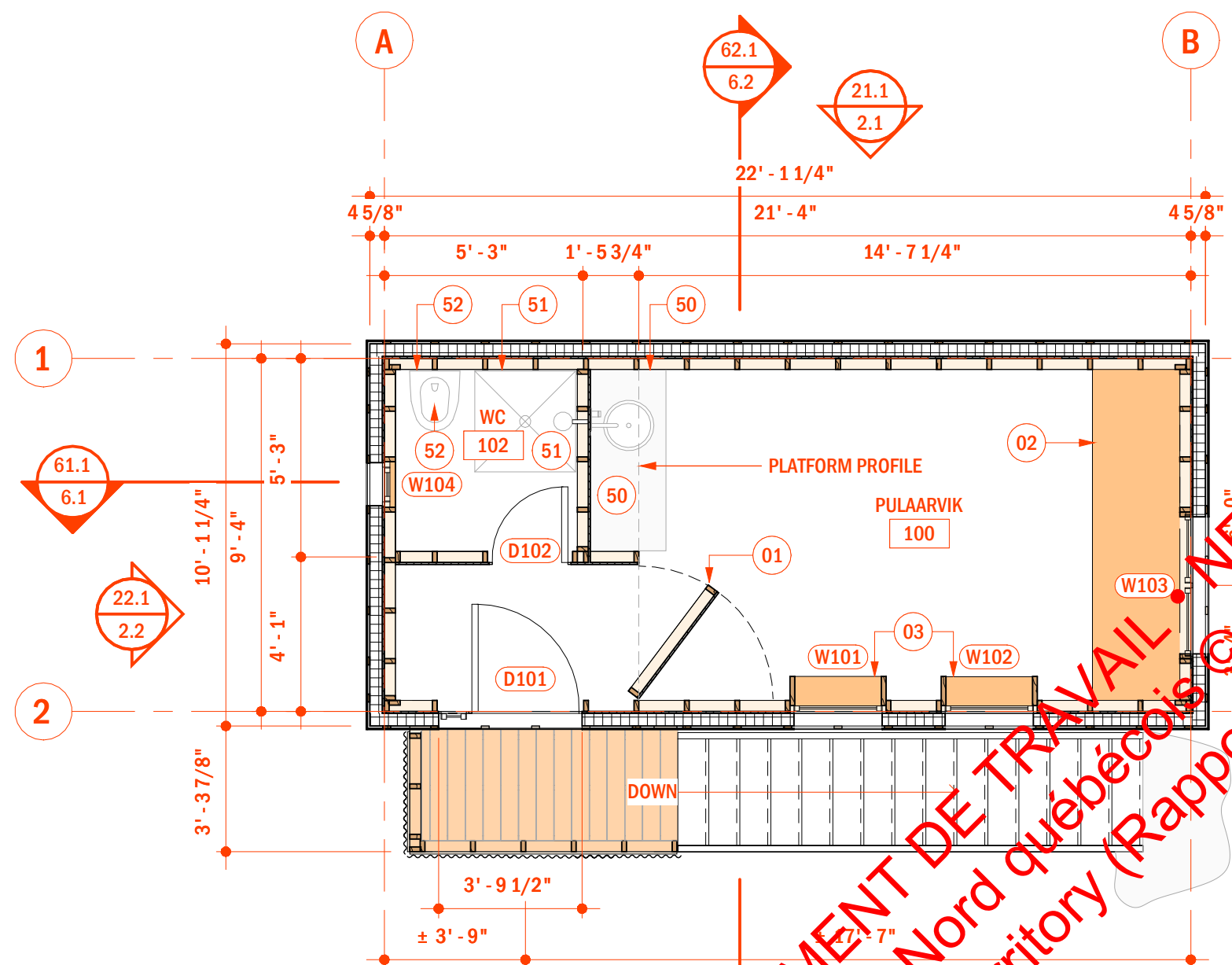
SPECIFIC NOTES
FLOOR PLANS

ARCHITECTURE

- 01 MOBILE PARTITION. SEE DETAIL XX
- 02 BUILT IN DESK. SEE DETAIL XX
- 03 OVERSIZED WINDOW SILL. SEE DETAIL XX
- 04 [NOTE]

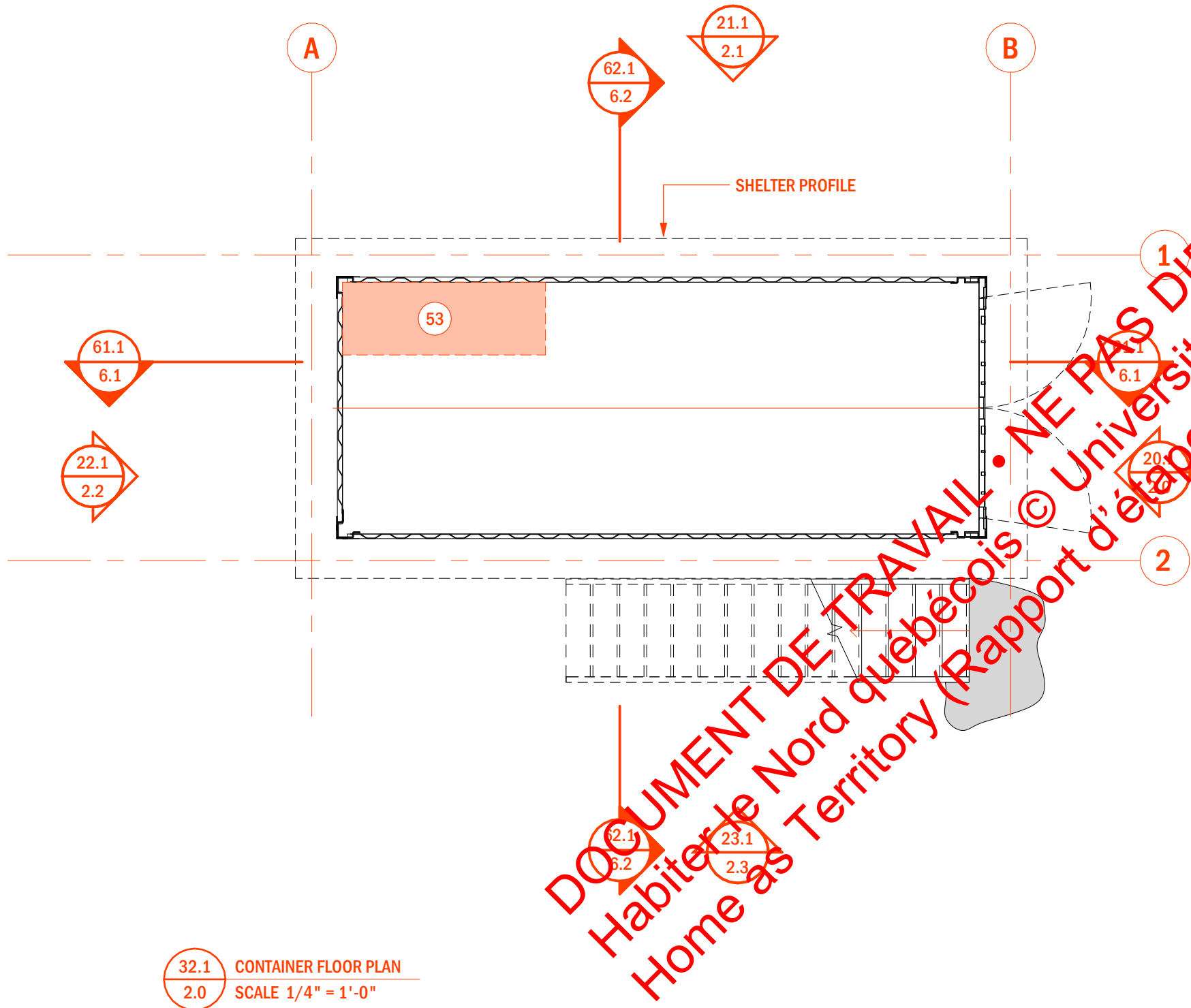
SPECIALTIES

- 50 MODULAR MINI KITCHEN WITH SINK AND SMALL REFRIGERATOR
- 51 SHOWER
- 52 TOILET
- 53 FUTURE MECHANICAL ROOM



31.1 SHELTER FLOOR PLAN
2.0 SCALE 1/4" = 1'-0"

DOCUMENT DE TRAVAIL • NE PAS DIFFUSER
Habiter le Nord québécois © Université Laval 2025
Home as Territory (Rapport d'étape, Jalon 3, Mars 2025)



32.1 CONTAINER FLOOR PLAN
2.0 SCALE 1/4" = 1'-0"

DOCUMENT DE TRAVAIL • NE PAS DIFFUSER
 Habiter le Nord québécois © Université Laval 2025
 Home as Territory (Rapport d'étape, Jalon 3, Mars 2025)

LEGEND		DIMENSIONS	
FLOOR PLANS			
WALLS AND PARTITIONS		GROSS OPENING	
TYPE COMPOSITION [SEE SHEET 6.0]		O.B.	
NEW PARTITION		REQUIRED CLEARANCE BETWEEN FINISHED FACES	
OPENINGS		OTHER	
DXXX : DOOR NUMBER			
WXXX : WINDOW NUMBER [SEE SHEET 0.1]			
NEW DOOR			
SPECIFIC NOTES			
FLOOR PLANS			
ARCHITECTURE			
01 MOBILE PARTITION. SEE DETAIL XX			
02 BUILT IN DESK. SEE DETAIL XX			
03 OVERSIZED WINDOW SILL. SEE DETAIL XX			
04 [NOTE]			
SPECIALTIES			
50 MODULAR MINI KITCHEN WITH SINK AND SMALL REFRIGERATOR			
51 SHOWER			
52 TOILET			
53 FUTURE MECHANICAL ROOM			

PROJECT

A SHELTER FOR NUNAVIK

PROJECT NUMBER 2440

CLIENT
 Habiter le Nord québécois
 École d'architecture de
 l'Université Laval
 1 Côte de la Fabrique
 Québec (Qc) G1R 3V6

EMISSIONS

FOR COORDINATION	2025-02-14
FOR COORDINATION	2025-02-21

DOCUMENT DE TRAVAIL • NE PAS DIFFUSER
 Habiter le Nord québécois © Université Laval 2025
 Home as Territory (Rapport d'étape, Jalon 3, Mars 2025)

COMPOSITIONS PRÉLIMINAIRES

EXTERIOR ENVELOPE

R1	ROOF	RSIe APPROX.	9.065
	REQUIRED EFFECTIVE RSI VALUE 9.00		
	- EXTERIOR FILM	0.030	
	- SELF-ADHESIVE SHEET MEMBRANE	0.030	
	- PRIMER	-	
	- LAMINATED BASE SHEET PANEL	0.440	
	- POLYISOCYANURATE FOAM INSULATION BOARD 4"	4.160	
	- POLYISOCYANURATE FOAM INSULATION BOARD 4"	4.160	
	- SELF-ADHESIVE VAPOUR BARRIER MEMBRANE	0.000	
	- PRIMER	-	
	- STRUCTURAL UNDERLAY (PLYWOOD) 5/8"	0.135	
	- FRAMING RAFTER 2x10 @ 16" C/C	-	
	- INTERIOR FILM	0.110	
F1	EXTERIOR WALL	RSIe APPROX.	4,797
	REQUIRED EFFECTIVE RSI VALUE 5.11		
	- EXTERIOR FILM	0.030	
	- EXTERIOR CLADDING	0.140	
	- VERTICAL FURRING STRIPS @ 16" C/C	0.180	
	- AIR BARRIER	0.000	
	- POLYISOCYANURATE FOAM INSULATION BOARD 4"	4.160	
	- AIR AND VAPOR BARRIER (SELF-ADHESIVE)	0.000	
	- SHEATING	0.135	
	- FRAMING STUDS 2x4 @ 16" C/C	-	
	- INTERIOR FILM	0.120	
F1	FLOOR	RSIe APPROX.	5.135
	REQUIRED EFFECTIVE RSI VALUE OF 5.2		
	- INTERIOR FILM	0.016	
	- SUBFLOOR (PLYWOOD 5/8")	0.135	
	- FRAMING STUDS 2x4 @ 16" C/C	-	
	- AIR SPACE	0.220	
	- VAPOR BARRIER	0.000	
	- JOIST 2x6 @ 16" C/C	-	
	- LOOSE-FILLED INSULATION 125mm	3.064	
	- RIGID INSULATION PANEL LAMINATED TO A ORIENTED STRAND BOARD (OSB) WITH AIR AND VAPOUR BARRIER (RSI MIN. OF 1.32)	1.350	
	- AIR BARRIER	0.000	
	- VERTICAL FURRING STRIPS @ 16" C/C	0.180	
	- EXTERIOR CLADDING	0.140	
	- EXTERIOR FILM	0.030	

LANTERNE
 ARCHITECTES

3b René-Levesque Est
 Québec, QC G1R 2A9

PROJECT
**A SHELTER FOR
 NUNAVIK**

PROJECT NUMBER 2440

CLIENT
 Habiter le Nord québécois
 École d'architecture de
 l'Université Laval
 1 Côte de la Fabrique
 Québec (Qc) G1R 3V6

EMISSIONS

FOR COORDINATION	2025-02-14
FOR COORDINATION	2025-02-21

STANDARD COMPOSITIONS

6.0

SHEET

PROJECT
**A SHELTER FOR
NUNAVIK**

PROJECT NUMBER 2440

CLIENT

Habiter le Nord québécois
École d'architecture de
l'Université Laval
1 Côte de la Fabrique
Québec (Qc) G1R 3V6

EMISSIONS

FOR COORDINATION	2025-02-14
FOR COORDINATION	2025-02-21

GENERAL SECTIONS

6.1

SHEET

LEGEND
GENERAL SECTIONS

WALLS AND PARTITIONS	DIMENSIONS
(X) — TYPE COMPOSITION [SEE SHEET 6.0]	X O.B. X GROSS OPENING
== NEW PARTITION	LIBRE REQUIRED CLEARANCE BETWEEN FINISHED FACES
OPENINGS	
(XXXX) DXXX : DOOR NUMBER WXXX : WINDOW NUMBER [SEE OPENING TABLES]	

SPECIFIC NOTES
GENERAL SECTIONS
ARCHITECTURE

01 RAFTERS AND STUDS SHOULD BE ALIGNED

02 PLATFORM INSTALLED AT TOP OF WALL LEVEL USING 5/8" PLYWOOD AND 2X4 JOIST SUPPORTED BY INTERIOR PARTITIONS AND FIXED TO OUTSIDE STUDS

03 [NOTE]

04 [NOTE]

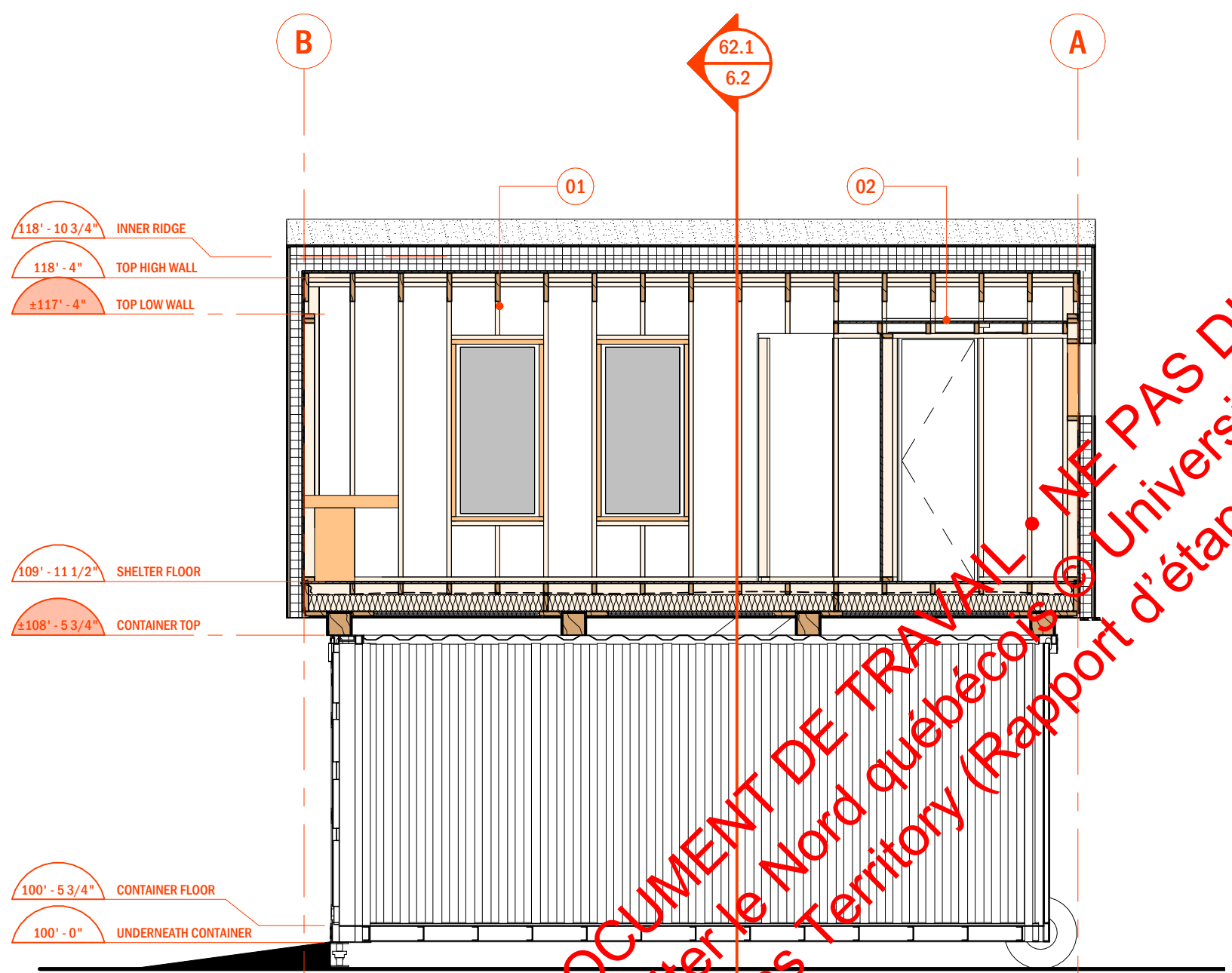
SPECIALTIES

50 [NOTE]

51 [NOTE]

52 [NOTE]

53 [NOTE]



61.1 LONGITUDINAL SECTION
3.1 SCALE 1/4" = 1'-0"

DOCUMENT DE TRAVAIL • NE PAS DIFFUSER
Habiter le Nord québécois © Université Laval 2025
Home as Territory (Rapport d'étape, Jalon 3, Mars 2025)

PROJECT
**A SHELTER FOR
NUNAVIK**

PROJECT NUMBER 2440

CLIENT

Habiter le Nord québécois
École d'architecture de
l'Université Laval
1 Côte de la Fabrique
Québec (Qc) G1R 3V6

EMISSIONS

FOR COORDINATION	2025-02-14
FOR COORDINATION	2025-02-21

GENERAL SECTIONS

6.2

SHEET

LEGEND
GENERAL SECTIONS

WALLS AND PARTITIONS	DIMENSIONS
(X) — TYPE COMPOSITION [SEE SHEET 6.0]	(X) — GROSS OPENING
== NEW PARTITION	O.B. — REQUIRED CLEARANCE BETWEEN FINISHED FACES
OPENINGS	LIBRE
(XXXX) DXXX : DOOR NUMBER WXXX : WINDOW NUMBER [SEE OPENING TABLES]	

SPECIFIC NOTES
GENERAL SECTIONS

ARCHITECTURE

01 RAFTERS AND STUDS SHOULD BE ALIGNED

02 PLATFORM INSTALLED AT TOP OF WALL LEVEL USING 5/8" PLYWOOD AND 2X4 JOIST SUPPORTED BY INTERIOR PARTITIONS AND FIXED TO OUTSIDE STUDS

03 [NOTE]

04 [NOTE]

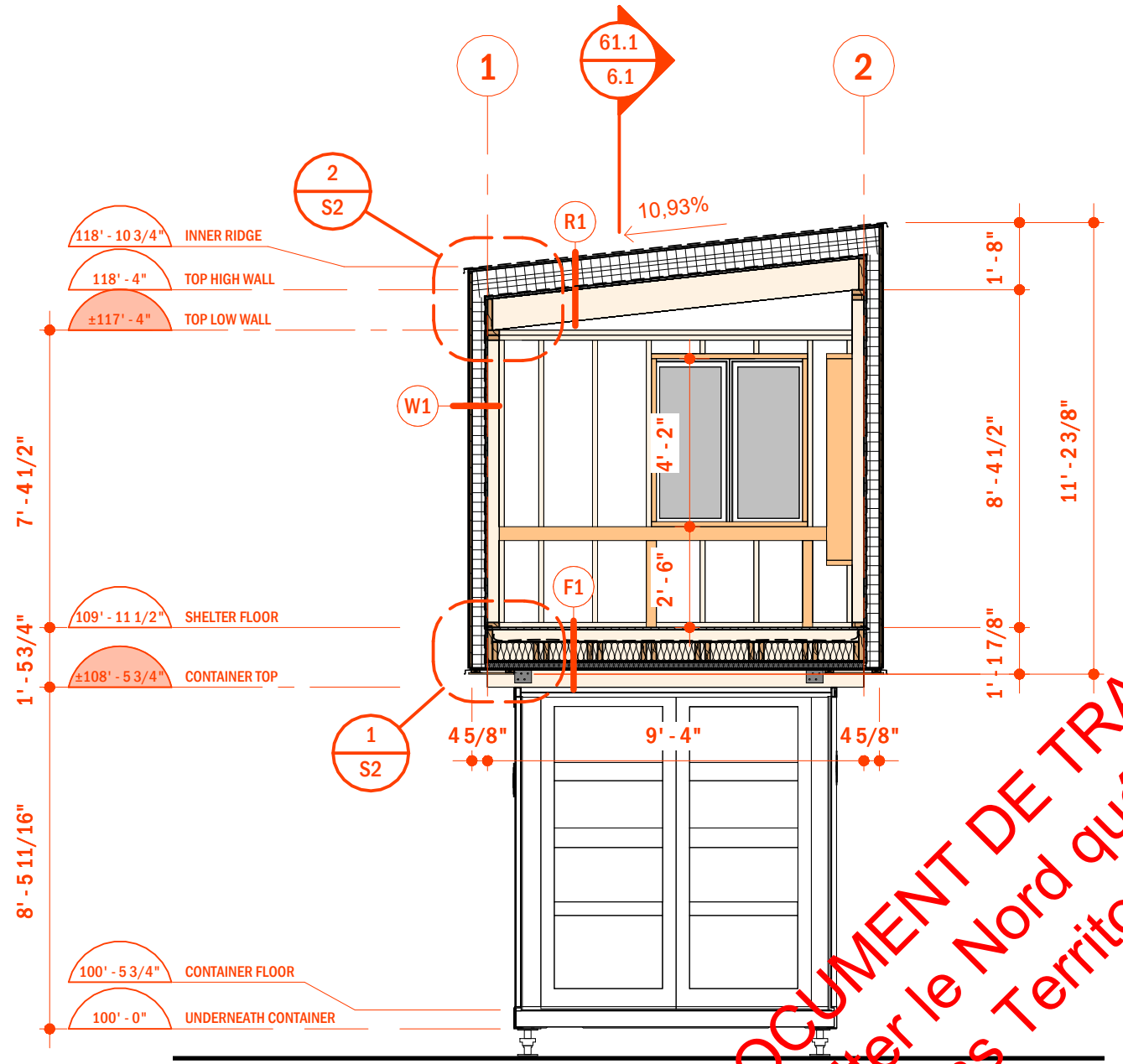
SPECIALTIES

50 [NOTE]

51 [NOTE]

52 [NOTE]

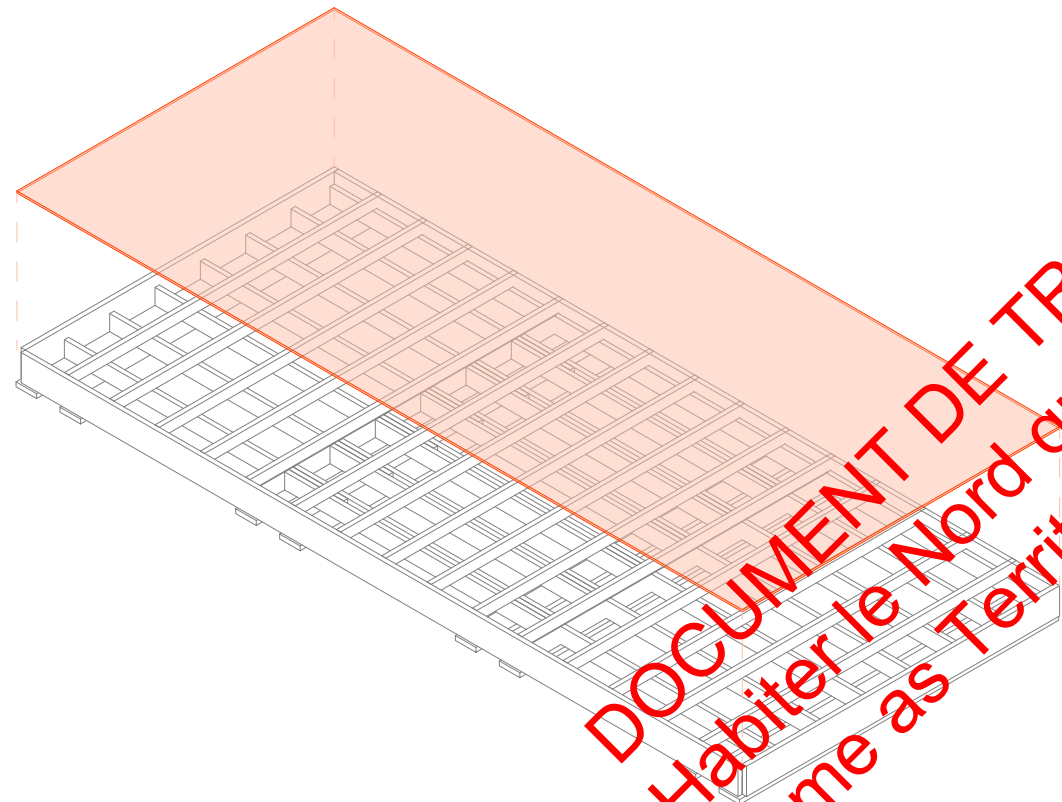
53 [NOTE]



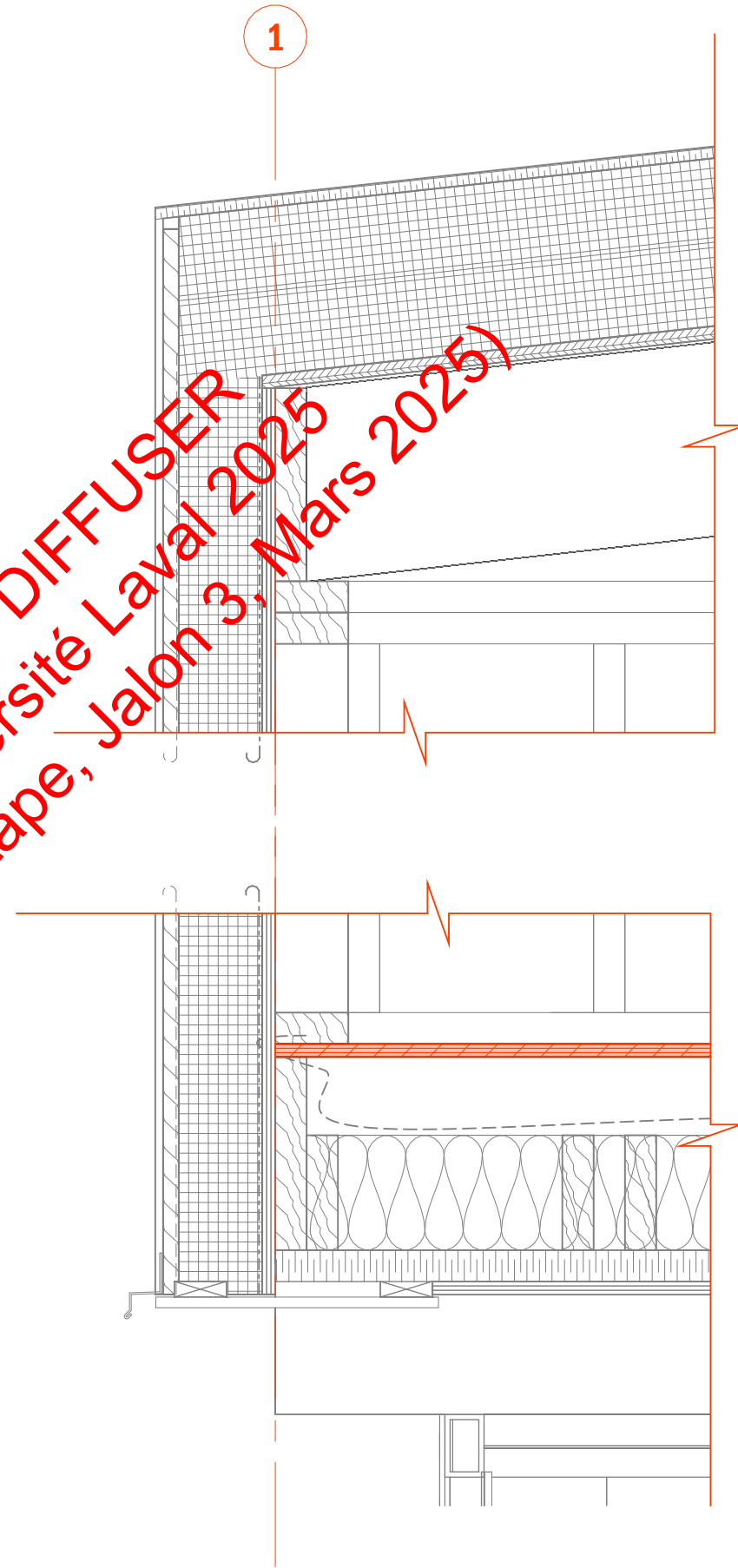
62.1 CROSS SECTION
3.1 SCALE 1/4" = 1'-0"

DOCUMENT DE TRAVAIL • NE PAS DIFFUSER
Habiter le Nord québécois © Université Laval 2025
Home as Territory (Rapport d'étape, Jalon 3, Mars 2025)

STEP X - SUBFLOOR



DOCUMENT DE TRAVAIL • NE PAS DIFFUSER
 Habiter le Nord québécois © Université Laval 2025
 Home as Territory (Rapport d'étape, Jalon 3, Mars 2025)



1 FLOOR/WALL JUNCTION - STEP 2
 6.2 SCALE 1 1/2" = 1'-0"

**LANTERNE
 ARCHITECTES**

3b René-Levesque Est
 Québec, QC G1R 2A9

PROJECT
**A SHELTER FOR
 NUNAVIK**

PROJECT NUMBER 2440

CLIENT
 Habiter le Nord québécois
 École d'architecture de
 l'Université Laval
 1 Côte de la Fabrique
 Québec (Qc) G1R 3V6

EMISSIONS

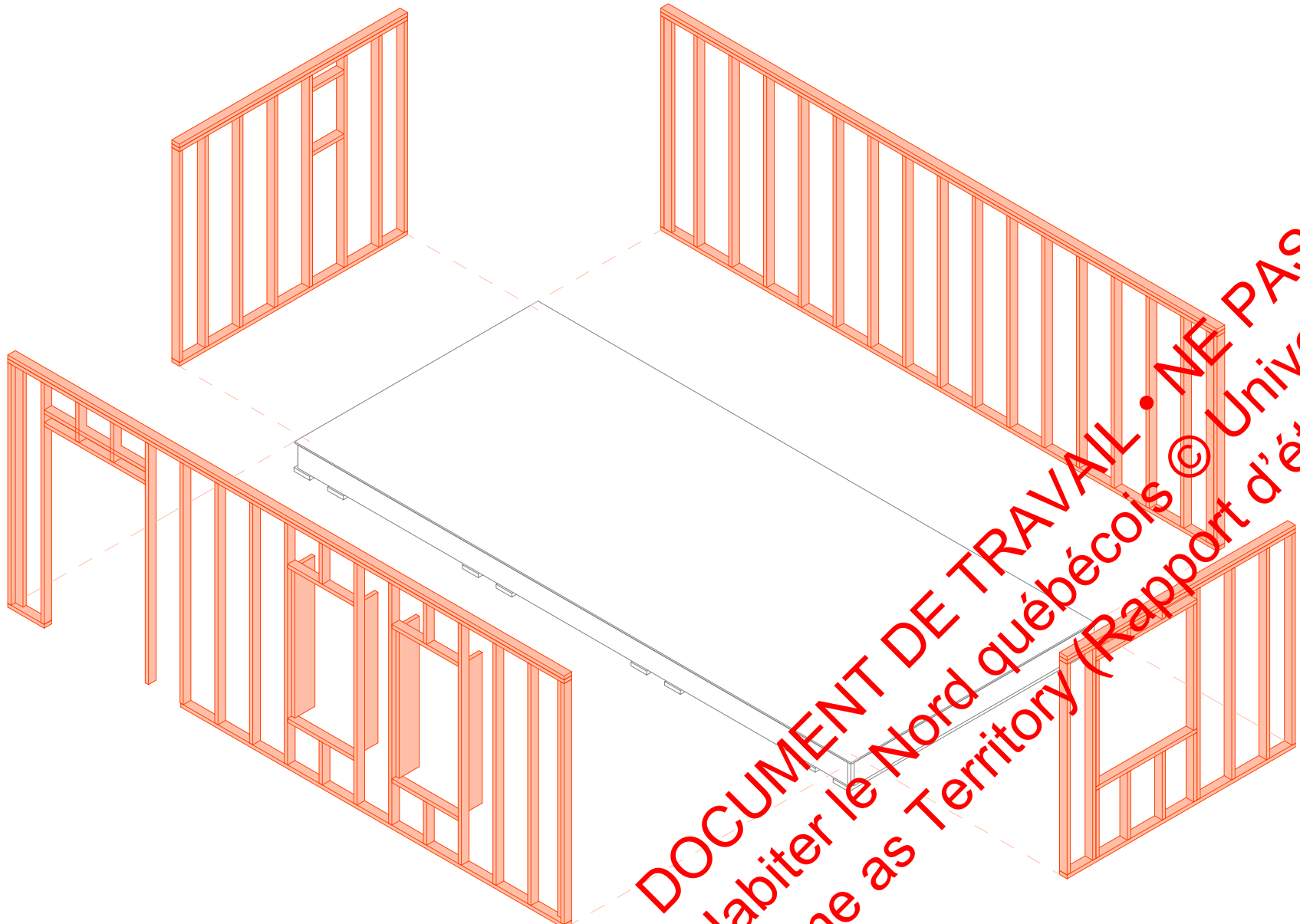
FOR COORDINATION	2025-02-14
FOR COORDINATION	2025-02-21

STEP 2 - SUBFLOOR

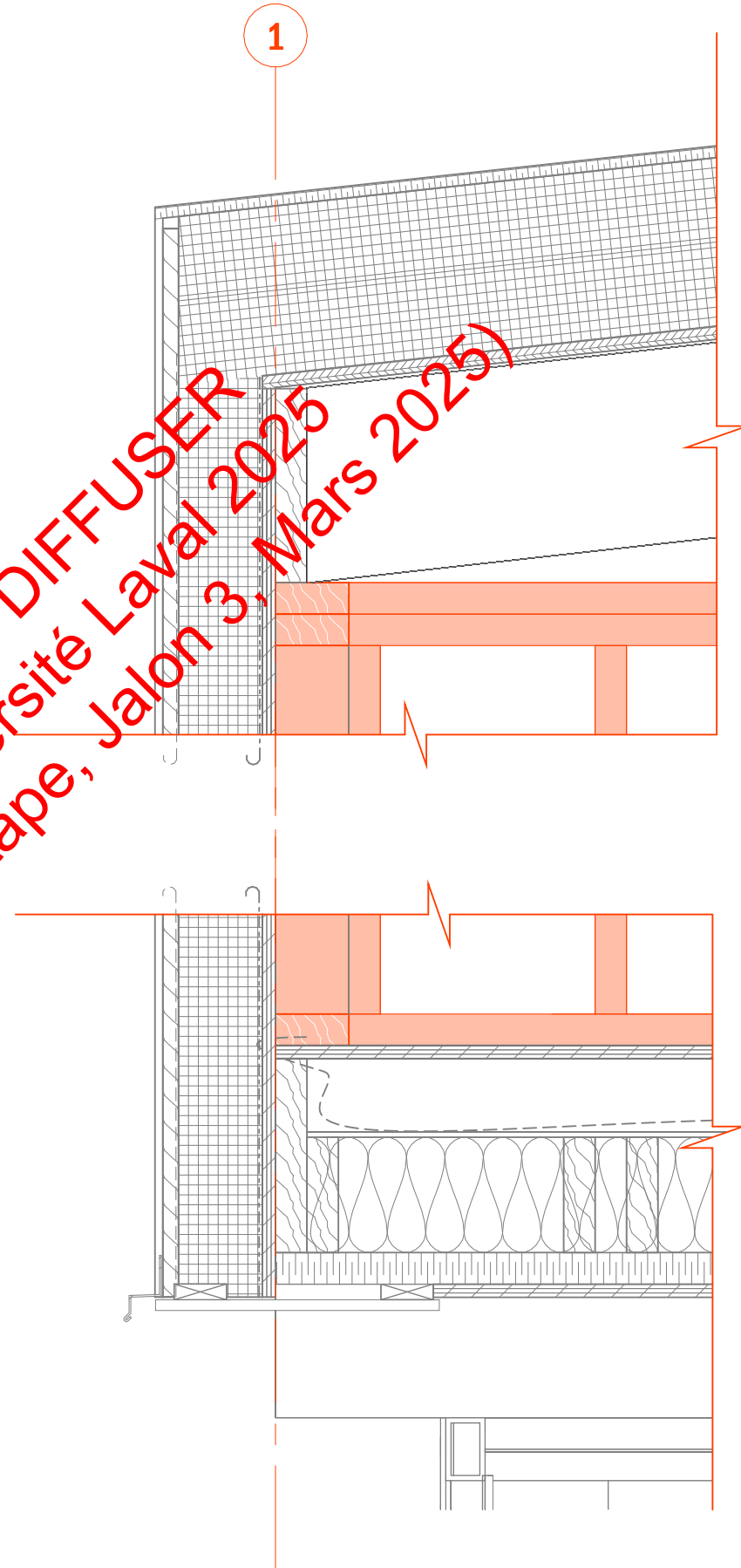
S2

SHEET

STEP X - WALL FRAMING



DOCUMENT DE TRAVAIL • NE PAS DIFFUSER
 Habiter le Nord québécois © Université Laval 2025
 Home as Territory (Rapport d'étape, Jalon 3, Mars 2025)



1 FLOOR/WALL JUNCTION - STEP 3
 SCALE 1 1/2" = 1'-0"

**LANTERNE
 ARCHITECTES**

3b René-Levesque Est
 Québec, QC G1R 2A9

PROJECT
**A SHELTER FOR
 NUNAVIK**

PROJECT NUMBER 2440

CLIENT
 Habiter le Nord québécois
 École d'architecture de
 l'Université Laval
 1 Côte de la Fabrique
 Québec (Qc) G1R 3V6

EMISSIONS

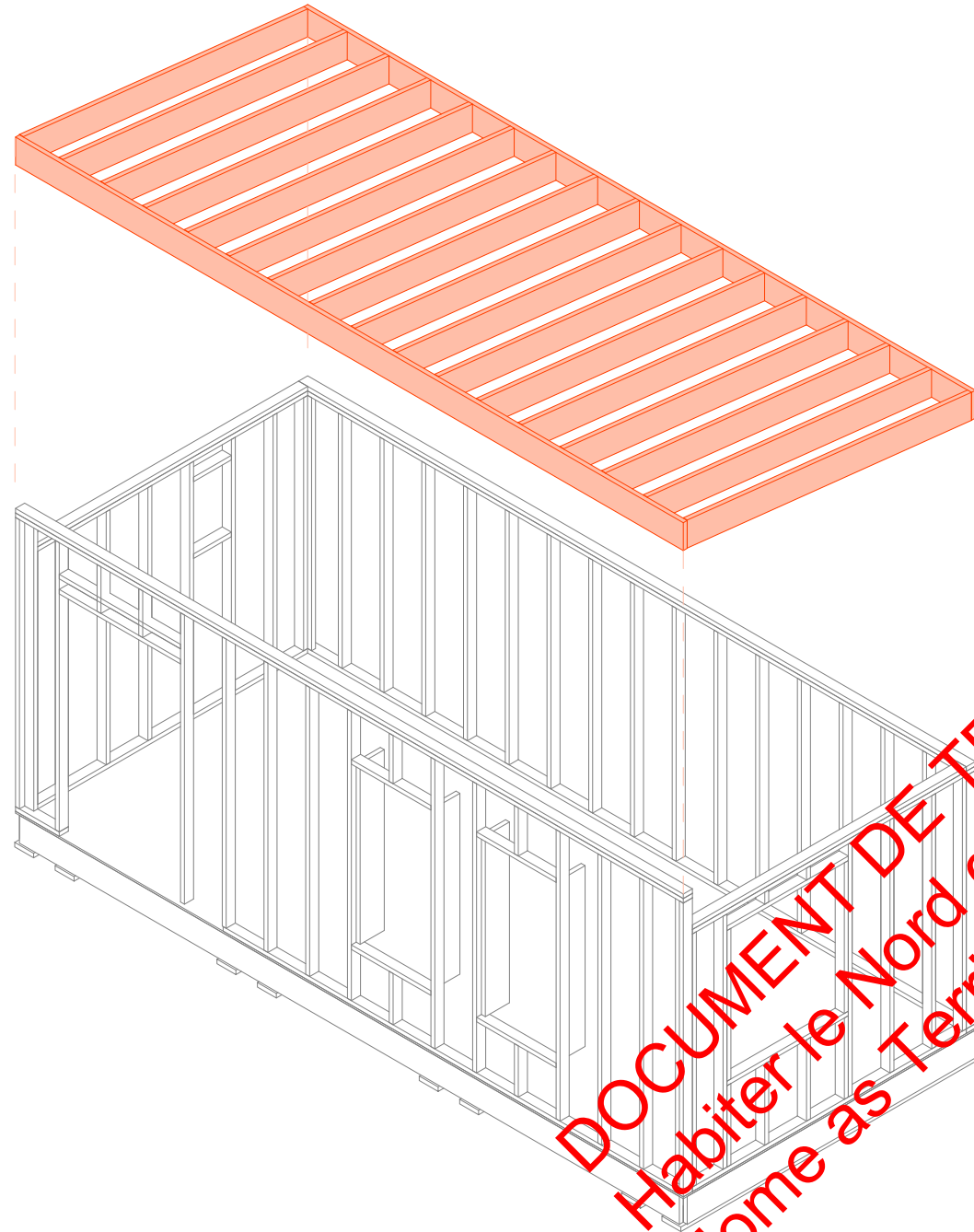
FOR COORDINATION	2025-02-14
FOR COORDINATION	2025-02-21

STEP 3 - FRAMING STUDS

S3

SHEET

STEP X - ROOF TRUSSES



DOCUMENT DE TRAVAIL • NE PAS DIFFUSER
Habiter le Nord québécois © Université Laval 2025
Home as Territory (Rapport d'étape, Jalon 3, Mars 2025)

PROJECT
**A SHELTER FOR
NUNAVIK**

PROJECT NUMBER 2440

CLIENT

Habiter le Nord québécois
École d'architecture de
l'Université Laval
1 Côte de la Fabrique
Québec (Qc) G1R 3V6

EMISSIONS

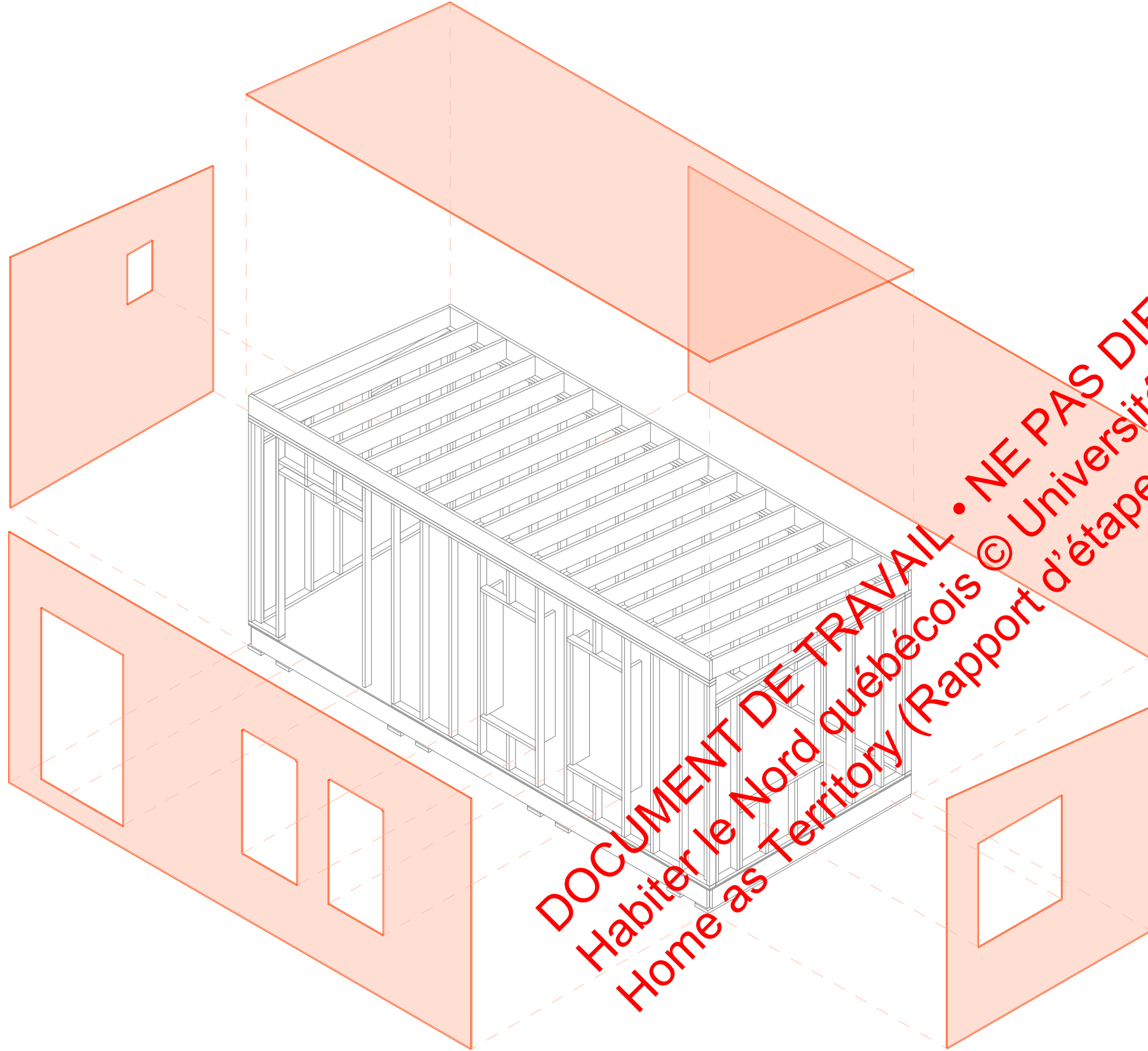
FOR COORDINATION	2025-02-14
FOR COORDINATION	2025-02-21

STEP 4 - ROOF TRUSSES

S4

SHEET

STEP X - SHEATHING



DOCUMENT DE TRAVAIL • NE PAS DIFFUSER
Habiter le Nord québécois © Université Laval 2025
Home as Territory (Rapport d'étape, Jalon 3, Mars 2025)

PROJECT
**A SHELTER FOR
NUNAVIK**

PROJECT NUMBER 2440

CLIENT

Habiter le Nord québécois
École d'architecture de
l'Université Laval
1 Côte de la Fabrique
Québec (Qc) G1R 3V6

EMISSIONS

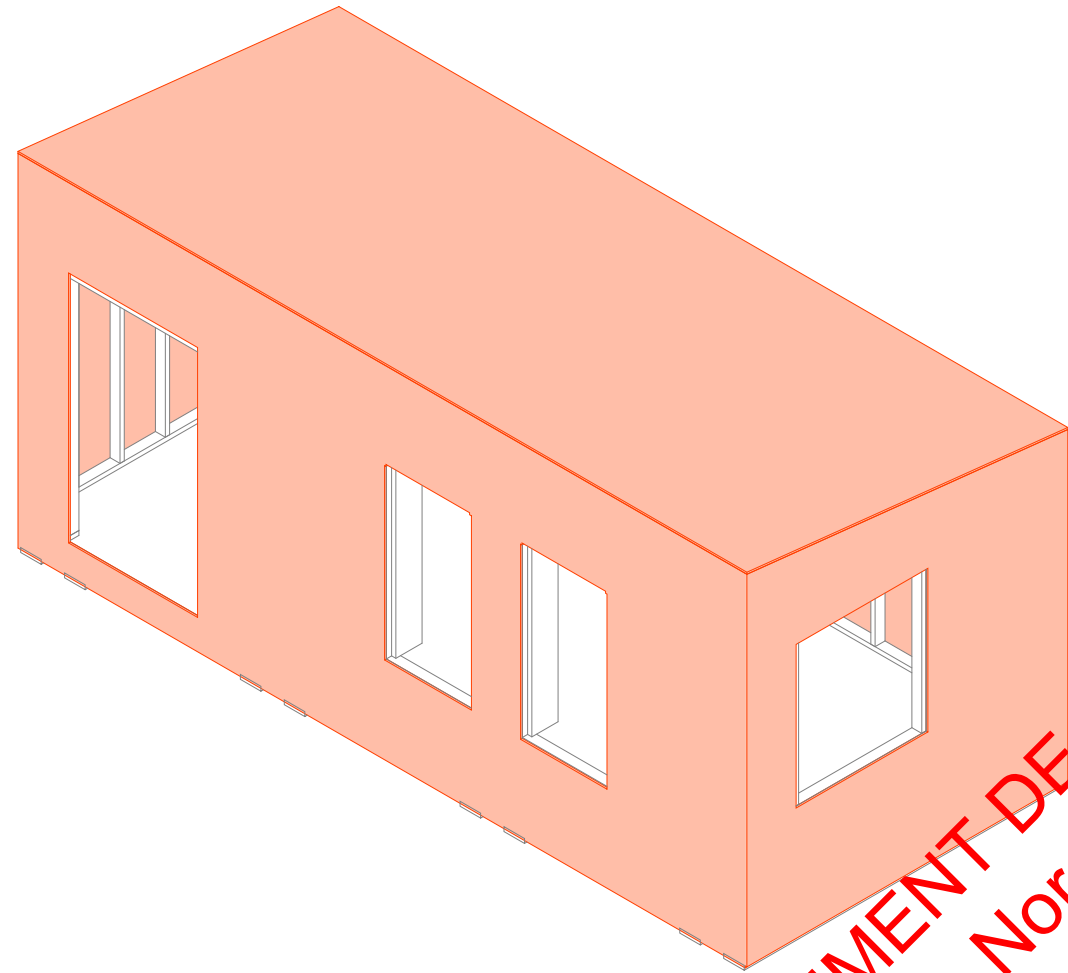
FOR COORDINATION	2025-02-14
FOR COORDINATION	2025-02-21

STEP 5 - SHEETING

S5

SHEET

STEP X - BARRIER



DOCUMENT DE TRAVAIL • NE PAS DIFFUSER
Habiter le Nord québécois © Université Laval 2025
Home as Territory (Rapport d'étape, Jalon 3, Mars 2025)

**LANTERNE
ARCHITECTES**

3b René-Levesque Est
Québec, QC G1R 2A9

PROJECT
**A SHELTER FOR
NUNAVIK**

PROJECT NUMBER 2440

CLIENT

Habiter le Nord québécois
École d'architecture de
l'Université Laval
1 Côte de la Fabrique
Québec (Qc) G1R 3V6

EMISSIONS

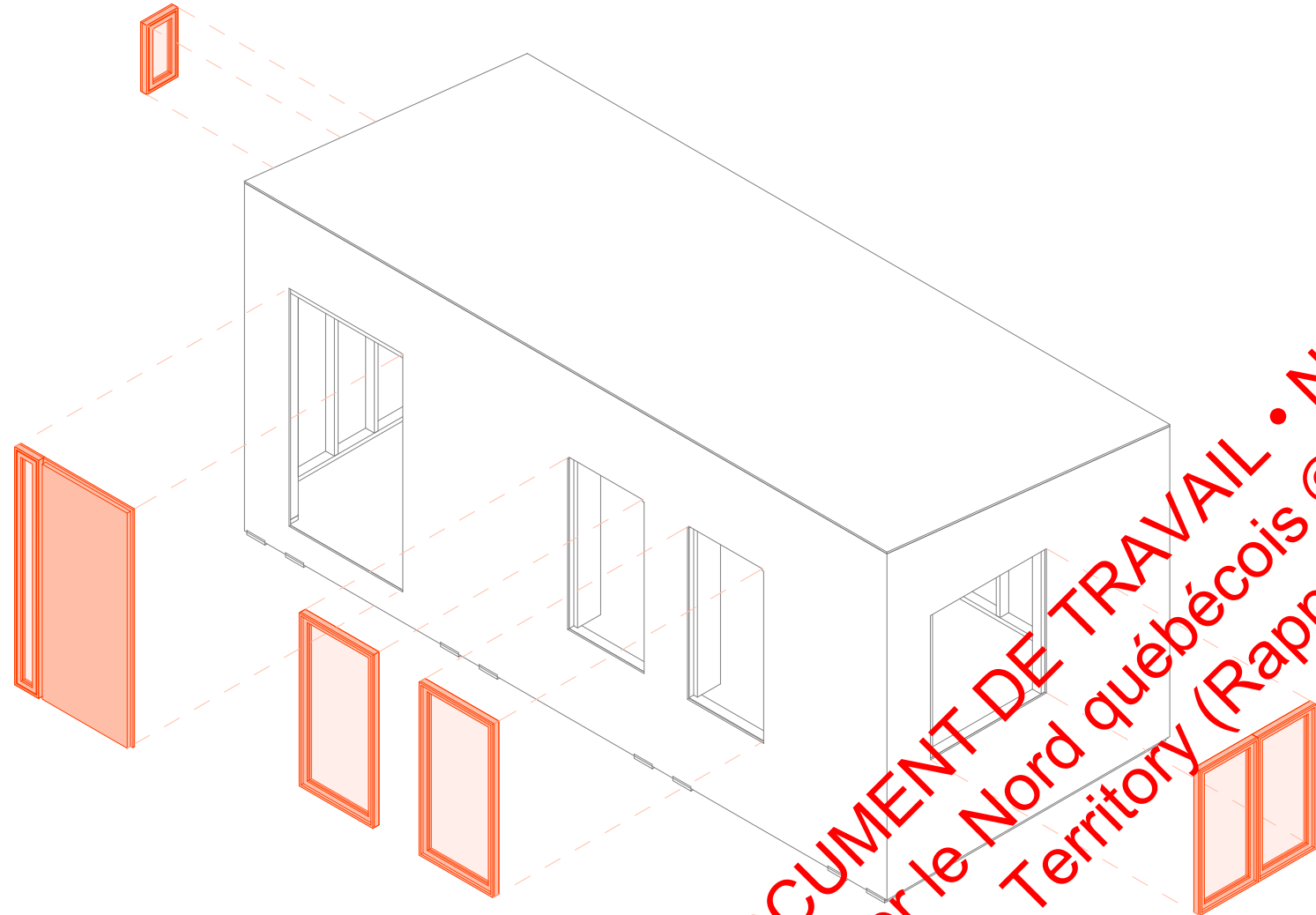
FOR COORDINATION	2025-02-14
FOR COORDINATION	2025-02-21

STEP 6 - BARRIER

S6

SHEET

STEP X - DOORS AND WINDOWS



DOCUMENT DE TRAVAIL • NE PAS DIFFUSER
Habiter le Nord québécois © Université Laval 2025
Home as Territory (Rapport d'étape, Jalon 3, Mars 2025)

PROJECT
**A SHELTER FOR
NUNAVIK**

PROJECT NUMBER 2440

CLIENT

Habiter le Nord québécois
École d'architecture de
l'Université Laval
1 Côte de la Fabrique
Québec (Qc) G1R 3V6

EMISSIONS

FOR COORDINATION	2025-02-14
FOR COORDINATION	2025-02-21

STEP 7 - DOORS AND
WINDOWS

S7

SHEET

STEP X - INSULATION



DOCUMENT DE TRAVAIL • NE PAS DIFFUSER
Habiter le Nord québécois © Université Laval 2025
Home as Territory (Rapport d'étape, Jalon 3, Mars 2025)

PROJECT
**A SHELTER FOR
NUNAVIK**

PROJECT NUMBER 2440

CLIENT

Habiter le Nord québécois
École d'architecture de
l'Université Laval
1 Côte de la Fabrique
Québec (Qc) G1R 3V6

EMISSIONS

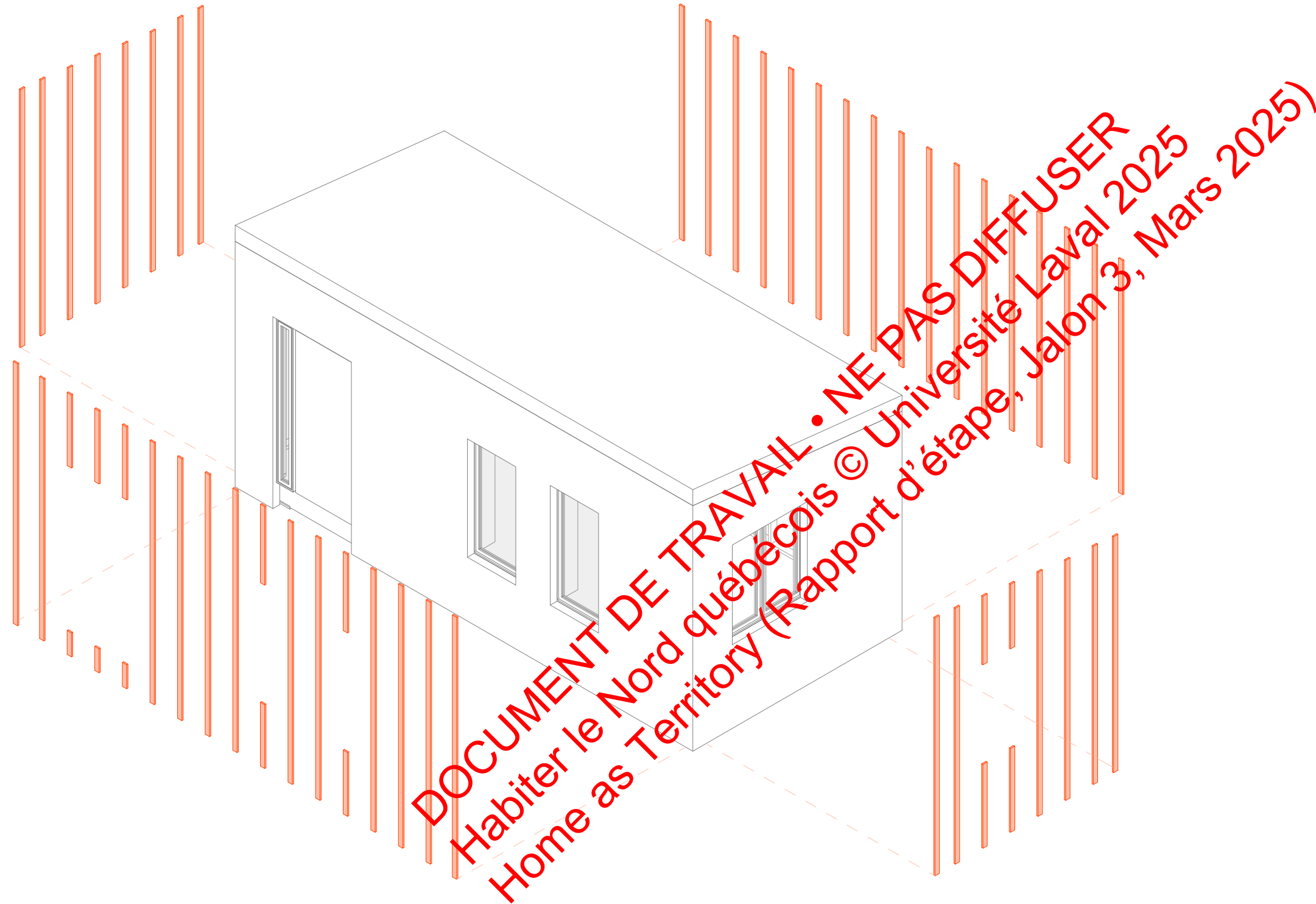
FOR COORDINATION	2025-02-14
FOR COORDINATION	2025-02-21

STEP 8 - INSULATION

S8

SHEET

STEP X - FURRING



PROJECT
**A SHELTER FOR
NUNAVIK**

PROJECT NUMBER 2440

CLIENT

Habiter le Nord québécois
École d'architecture de
l'Université Laval
1 Côte de la Fabrique
Québec (Qc) G1R 3V6

EMISSIONS

FOR COORDINATION	2025-02-14
FOR COORDINATION	2025-02-21

STEP 9 - FURRING

S9

SHEET